

YOU MUST SHOW LOGICAL, NEAT AND ORGANIZED WORK TO EARN FULL CREDIT

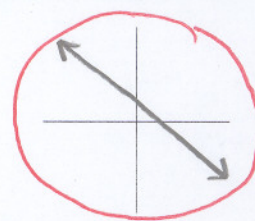
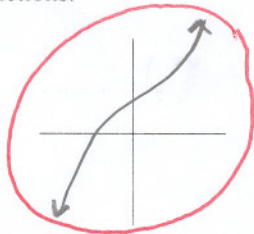
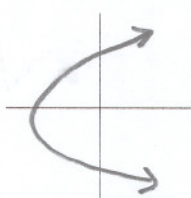
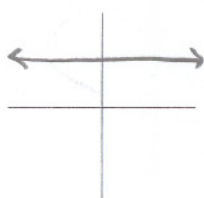
PUT A BOX AROUND YOUR FINAL ANSWER

- [1] Find the inverse of $f(x) = 7 + \sqrt{5-x}$.

SCORE: ___ / 7 POINTS

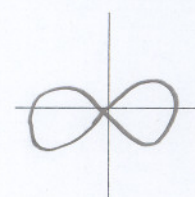
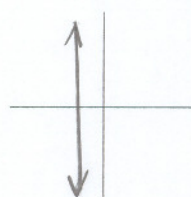
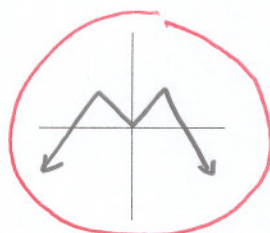
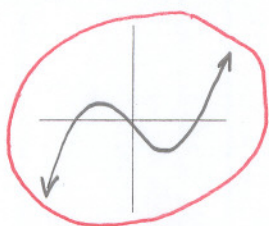
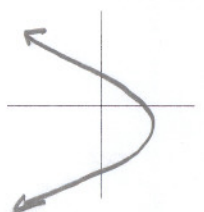
- [2] Circle the 2 graphs which represent one-to-one functions.

SCORE: ___ / 4 POINTS



- [3] Circle the 2 graphs which represent functions.

SCORE: ___ / 4 POINTS



- [4] Sketch the inverse of the function shown below.

SCORE: ___ / 5 POINTS

