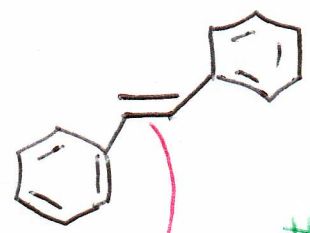
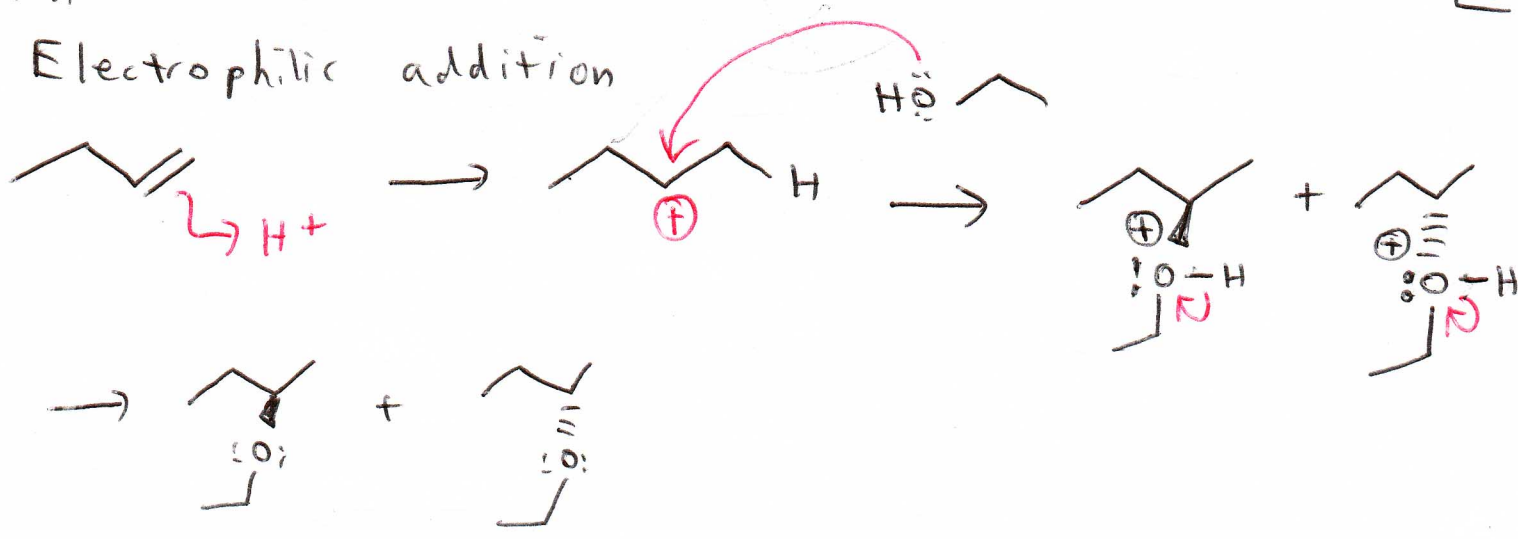


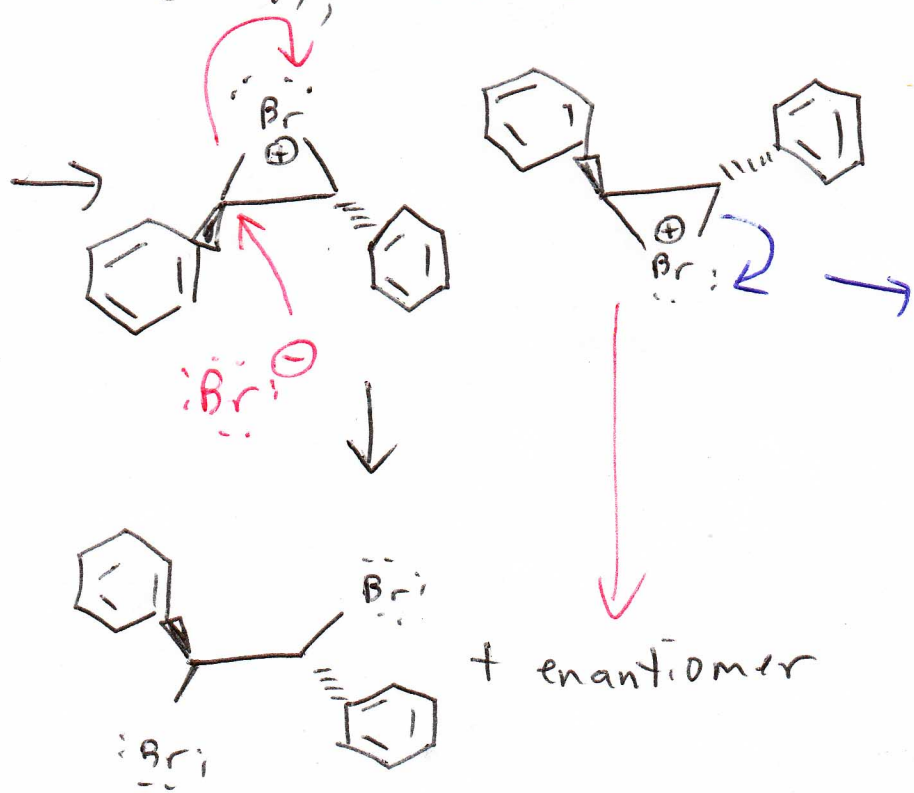
Electrophilic addition



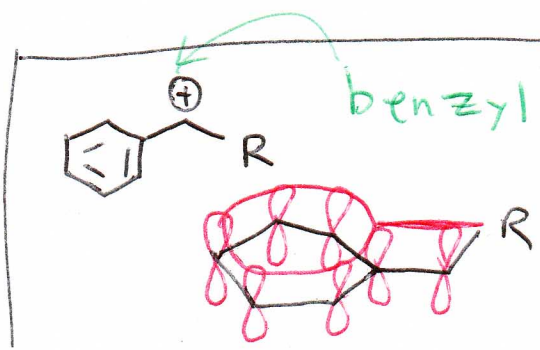
(E)-1,2-diphenylethene

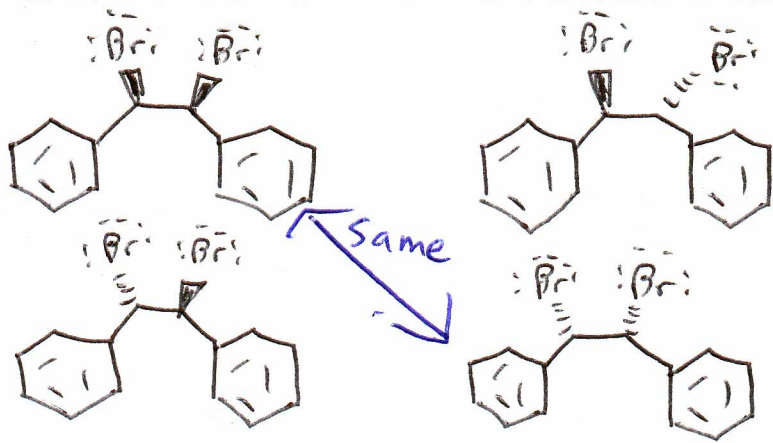
In this reaction, Br_2 (with oxidation state 0) is converted into Br^- (oxidation state -1), which is favorable.

not needed for ethene (only two carbons)

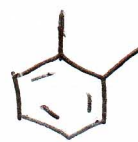


Cyclobromonium ion





$\text{CH}_3 -$ methyl $-\text{CH}_2-$ methylene



] xylene

para meta ortho

xylene \rightarrow a mix of all three xylenes

